

Tanzania

Transitioning Villages to Agroforestry

Annual Update 2019



In Tanzania, the deforestation rate is amongst the highest in East Africa and the destruction of natural forests is threatening rural communities and native wildlife. In the Mara region in the North of Tanzania, WeForest collaborates with Global Resource Alliance (GRA) to plant and distribute trees among farms, households and schools. The trees provide decades of food, medicine, shade, firewood, carbon fixation, environmental enhancements and wildlife habitat.



In the village of Kinesi, forests are not only good for the environment, they are also directly impacting children. The pictures here show the Ingrijuu Primary School and its close surroundings, in August 2009 and in May 2019. Pupils are directly involved in the reforestation programme and learn how important trees are, how to take care of them, and they receive fruits throughout the school year.

Since 2011 **your support has contributed to the planting of close to 1 million trees in the Mara region and is...**

- **Supporting local people:** to date over 8,400 households have benefited
- **Generating employment:** The staff in the tree nurseries in this project grows thousands of seedlings which are then distributed to schools, churches, farmers, and vulnerable households. Both nurseries, Kinesi and Butiama, have been operating very well with 8 workers each, a supervisor, two guards and a cook.
- **Creating environmental awareness** - over 2,000 households and 130 primary and secondary schools have received training as well as support when planting trees on homesteads, farms, and school grounds.

Thank You!

2019 At a Glance

Since the project began we have distributed close to 1 million tree and around one third (311,739) trees in 2019 alone thanks to the new nursery. The majority of trees are distributed during the rainy season (October and November) since it allows the trees to take full advantage of the moisture available in the soil. There is high demand for trees in the Kinesi and Butiama districts with local people keen to continue planting: we had no problem finding welcoming homes for the trees!



The staff of Kinesi tree nursery

Since the project began the project has benefited over 8,400 households. In 2019, almost 500 people received trees from October onwards and most receiving between 5 and 200 trees. 127 schools received 108,392 trees in total. A new truck we acquired made the distribution from the Kinesi nursery more efficient.

45 different tree species were distributed in 2019 including:

- *Casuarina Equstfolia*: an evergreen tree with a finely branched, feathery crown that can grow on poor soils. Young plants are susceptible to drought until their roots reach the groundwater table, which may take up to 2 - 3 years after planting but then they become very drought resistant. Root nodules fix atmospheric nitrogen which benefits the soil.
- *Acacia Nilotica*: in addition to timber, fuel, shade, food, fodder, honey, dye, gum and fences, it fixes nitrogen and supports the growth of grass and cereal crops. It is used as a pioneer species in the reclamation of mining areas and in areas where degradation and erosion have occurred.
- Orange trees: Oranges are often grown and intercropped with other fruits like bananas, mangoes, coconut and pineapples as well as paddy, maize and cassava. The different

varieties of orange help farmers to extend the seasonality because of different growth conditions.

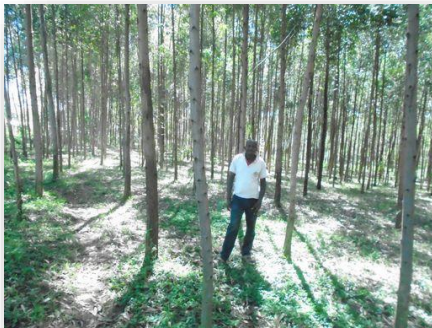
- *Melia azedarach* is a fast-growing, deciduous tree in the mahogany family and an important tree for local people, providing a wide range of medicinal applications, as an insecticide and repellent.

Stories from the Field

A well-equipped nursery was opened. A whole new nursery was established in Butiama District in early 2019 to cope with the demand for trees. The inaugural ceremony took place on Oct 4th 2019 with more than 200 participants including guest of honor Butiama District Commissioner, Anna Rose Nyamubi. Recently, a new solar water system was installed and brings water for the saplings from a pond 300 meters away. The system consists of a solar pump, two 5,000 liters tanks and 4 points of distributions with taps.



The new solar irrigation system



Amosi Sagara on his farm

Checking tree survival. The team visited two sites to evaluate how the trees that you support are cared for. One family plot belongs to Amosi Sagara who has planted over a total of 3,500 trees of timber and avocado trees. The trees are distributed across his plots and he and his family take excellent care of them.

Get kids engaged at young age. Ng'ereng'ere Primary School in Tarime district has 550 students and 14 teachers. They have planted 1,450 trees. During the dry season students bring water to school to support the growing saplings that are now thriving!



Coming Up in 2020

During spring of 2020 we plan to distribute **300,000 trees** from the Butiama and Kinesi nurseries - 150,000 seedlings are in preparation in each one. **208,200 seedlings are already growing...**and the team is still at work!

Planting in nurseries happens the whole year except for April, May, October and November. The seedlings are distributed during spring (mostly April and May) and autumn (mostly October and November). Tree audits and (re)training across schools and farms happens from January to March. General training in several subjects such as harvesting and sustainable use of forest products, takes place from April to December.



The new nursery is well stocked!

For more information on our project in Tanzania
<https://www.weforest.org/project/tanzania>

For more high-quality photos from Tanzania, click [here](#)